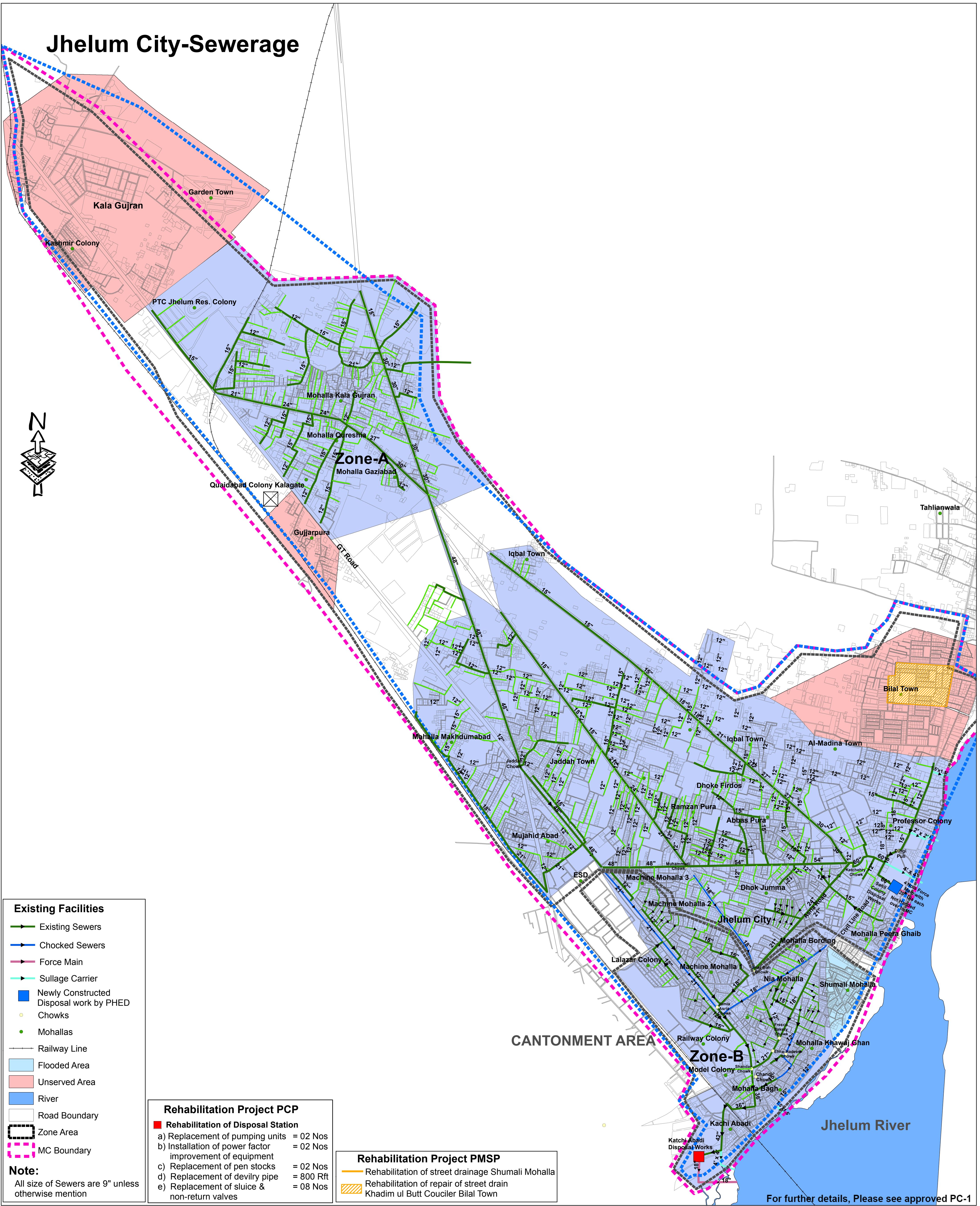


# Jhelum City-Sewerage



**Existing Facilities**

- Existing Sewers
- Chocked Sewers
- Force Main
- Sullage Carrier
- Newly Constructed
- Disposal work by PHED
- Chowks
- Mohallas
- Railway Line
- Flooded Area
- Unserved Area
- River
- Road Boundary
- Zone Area
- MC Boundary

**Note:**  
All size of Sewers are 9" unless otherwise mention

**Rehabilitation Project PCP**

- Rehabilitation of Disposal Station
- a) Replacement of pumping units = 02 Nos
- b) Installation of power factor improvement of equipment = 02 Nos
- c) Replacement of pen stocks = 02 Nos
- d) Replacement of devilyr pipe = 800 Rft
- e) Replacement of sluice & non-return valves = 08 Nos

**Rehabilitation Project PMSP**

- Rehabilitation of street drainage Shumali Mohalla
- Rehabilitation of repair of street drain Khadim ul Butt Couciler Bilal Town

For further details, Please see approved PC-1