

Annual Report 2018-19

13200 لوکل گورنمنٹ نمبر
دفتر میونسپل کارپوریشن جہلم

جناب

Municipal Corporation Jhelum

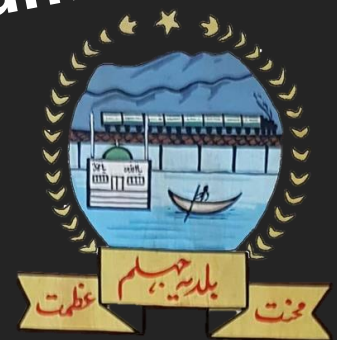


Table of Contents

1. Background:.....	1
1.1. District Status.....	1
1.2. Location	1
1.3. The Climate.....	1
1.4. Demographic status.....	1
1.5. Sports Activities.....	1
2. Economic Activities in the City.....	2
3. Map of District Jhelum:	3
4. Functions of Municipal Corporation Jhelum	3
5. Human Resource at MC:.....	4
5.1 Municipal Corporation organogram.....	4
5.2 Administrative Setup	4
5.3 Human resource Available at MC.....	5
6 Annual Budget:	6
6.1 Development expenditure	6
7 Development Projects	7
8. Municipal Services Delivery Detail.....	7
8.1. Water supply system	7
8.1.1. Water supply hours	7
8.1.2. Total coverage of the city.....	8
8.1.1. Map of Water Supply	8
8.1.2. Tariff structure	8
8.1.3. Water filtration plants:	8
8.1.4. The water source & storage	9
8.1.5. Manpower deployment	9
8.2. Solid waste management.....	9
8.2.1. Solid waste Generation & Disposal	9
8.2.2. Equipment & Machinery.....	9
8.2.3. Manpower Deployed.....	10
8.2.4. Coverage Detail.....	10
8.3. Sewerage	11
8.3.1. Coverage	11
8.3.2. Existing pumping / disposal stations.....	12
8.3.3. Sucker & jetting machines	12
8.3.4. Manpower deployed.....	12

8.3.5.	Tariff structure	12
8.3.6.	Drainage zones.....	12
8.3.7.	Sewer lengths	13
8.4.	Streetlight.....	13
8.4.1.	Street lights on Major roads:	13
8.4.2.	Ward wise detail of existing street lights	14
8.4.3.	Expenditure on street lights.....	15
9.	Complaint Management.....	15
10.	MC Website (www.mcJhelum.lgpunjab.org.pk)	15
11.	MC Response to the Requests of Citizens under RTI Act 2013	16
Annex A	18
Annex B	23
Annex C	30

Foreword:

On behalf of the Municipal Corporation Jhelum, I hereby present this Annual Report for the financial year 2018-19. The report will give our stakeholders and communities an insight into the performance and achievements of the Municipal Corporation. The current Annual Report outlines MCs successes and shortcomings in relation to our mandate as provided in the key focus areas of Local Governments. These can be summarized as; Building a Municipal Corporation that is efficient, effective and responsive; Strengthen Accountability and promote fairness in its dealings; Accelerating Service Delivery and supporting the vulnerable; Promoting Economic and Social development; Fostering Development Partnerships, Social Cohesion and Community Uplift Programs. It is pertinent to note that these endeavors' can never be successfully achieved on their own but it becomes materialized by the collective efforts of officers, officials and support staff who work together in identifying challenges and to meet those challenges with rigor efforts and earnest professional approach.

It is commendable to note the improvements in relation to our spending and expenditure patterns, but we need to do more. The ever present excuse of lack of resource might be a legitimate one, but the key question is how effectively we use the resources at our disposal to accomplish our goals and attaining set targets. It is clear in this annual report that we are moving in the right direction. It is of paramount importance to synchronize our program plans with quarterly targets to achieve our broader goals effectively and efficiently.

Administrator
Municipal Corporation
Jhelum

1. Background:

1.1. District Status

The city of Jhelum is the headquarters of Jhelum district, an administrative subdivision of the Punjab province. Jhelum is a few miles upstream from the site of the ancient Battle of the Hydaspes between the armies of Alexander and King Pours. A city called Bucephala was founded nearby to commemorate the death of Alexander's horse, Bucephalus. Other notable sites nearby include the 16th-century Rohtas Fort, the Tilla Jogian complex of ancient temples, and the 16th-century Grand Trunk Road which passes through the city. The name of the city is derived from the words Jal (pure water) and Ham (snow), as the river that flows through the tract, originates in the Himalayas. There are a number of industries in and around Jhelum city, including a tobacco factory, wood, marble, glass and flour mills

1.2. Location

Jhelum is a city on the right bank of the Jhelum River, in the district of the same name in the north of Punjab province. It is situated on the Grand Trunk Road in the north-west at a distance of 180 Kilometers from the Lahore (Punjab capital). The city is located at a distance of 115 Kilometers from Islamabad and located at 32°56' North latitude and 73°44' East longitude and elevation of 234 meters above mean sea level.

1.3. The Climate

Jhelum has a monsoon-influenced humid subtropical climate which monsoon season of April to June is 49.2 °C (120.6 °F), whereas in winter the minimum temperature recorded is -0.6 °C (30.9 °F). Average annual rainfall is about 850 millimeters (33 in) which is much below the required quantity given the extremely high evaporation levels. Nevertheless, in the rainy season water torrents flow from the north to Jhelum River very rapidly and cause damage to the crops, bridges, roads. This is responsible for the soil erosion in the district.

1.4. Demographic status

The population census report of year 2017 has not been published by Government of Pakistan. However the provisional data available for this census shows the population of 254,765 persons for the city within municipal limits. A land scan process was done to estimate the population of entire inhabited areas of city in close approximation which was found to be 265,970 persons in the year 2017 with an annual growth rate of 1.66% and it is expected to rise to 313,469 persons in the year 2027. Some inhabitation has developed outside the municipal limits of the city and the municipal limits need to be extended.

1.5. Sports Activities

The main sports of the area are centered on agricultural pursuits and excellence and include Bugdar (stone) lifting by young men. A localized version of Kabbadi, bull races centered on a Persian water wheel at the villages of Kantrili, Nathwala and Jada near the suburban town Kala Gujran. Tent pegging also known as Neza Bazi which indicates the region's prowess during war and battle and hence the city being attributed the name of

land of martyrs and warriors Zamir Jaffri Cricket Stadium near Suleiman Park is named after Zamir Jaffri Cricket Stadium, a prominent poet from Jhelum. Hockey is another sport which is very popular in Jhelum.

2. Economic Activities in the City

There are numbers of industry in and around Jhelum City. Major industries include a Tobacco factory, wood, marble, glass and flour mills.

District Jhelum is quite poor in agriculture production. The major crop is wheat, annual average production of which during the period 20017-18 was 144.56 thousand M. Tons.

There are already 12 flour mills in district Jhelum. Therefore, establishment of additional flour mills is not advisable.

Fruit and vegetables are grown in small quantities which are not sufficient to meet the overall requirement of the district. Therefore, there exists very good potential for cold storage in the district, so that the vegetables/fruit purchased from other district would be preserved for short period to maintain regular supply in the local markets.

As per Punjab Development Statistics 2008, the population of cattle, buffaloes, sheep and goats was 167, 146, 59 and 303 thousand heads respectively. As regards poultry, there are 371 broiler and 80 layer poultry farms having rearing capacity of 6951 and 269 thousand birds respectively. The annual availability of hides and skins is estimated at 136 thousand pieces.

In view of relatively small size of livestock as compared to other district of Punjab, there exists good scope for organized dairy farms, cattle/goats/sheep fattening farms, cattle/poultry feed mills. Leather shoes and leather products unit can be established in the district.

District Jhelum is quite rich in minerals, Rock Salt, Brine, gypsum, coal are being excavated in the district. There are already three cement and one soda ash manufacturing units operating in the district, However the industrial potential of Bentonite, Dolomite and Coal is not yet exploited. After a careful study, a power generation unit based on Coal may be established. Bentonite/Dolomite processing units, cooling / Iodonised / Pharmaceutical grade Salt manufacturing units also seems to be feasible projects. In view of the cement factories operating in the district and making arrangement with WAPDA and Railway Departments, Concrete Railway Sleepers and Electric Poles manufacturing units possess very good prospects. The existing chip-Board/Ply-Wood Units suggest good prospects for Flush Door / Panels and Furniture Units.

3. Map of District Jhelum:



4. Functions of Municipal Corporation Jhelum

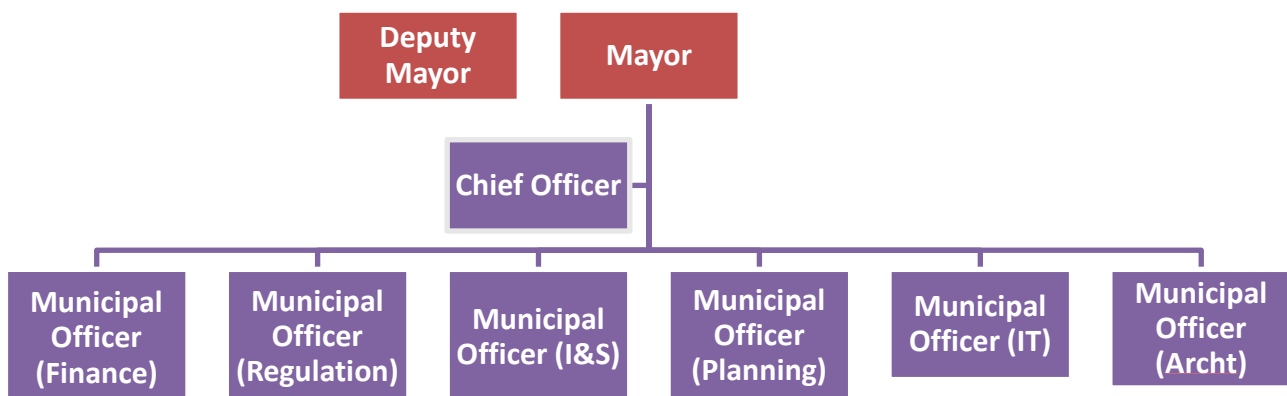
Municipal Corporation Jhelum is responsible for performing the following functions as per new PLGA 2019:

- Economic and value chain development;
- Management of primary, elementary and secondary education facilities;
- School enrolment and universal education;
- Monitoring and supervision of primary health care facilities;
- Preventive health and hygiene;
- Population welfare including population control;
- Solid waste collection and disposal;
- Sewerage collection and disposal including water management and treatment;
- Building control and land use;
- Births, deaths, marriages and divorce registration;
- Museums and art galleries;
- Open markets;
- Livestock and agriculture markets;
- Public parking facilities;
- City roads and traffic management;
- Public transport;
- Abstraction of water for industrial and commercial purposes;
- Emergency planning and relief;
- Support to provincial agencies in prevention of crime and maintenance of public order; and
- Regulatory enforcement in the functions
- Establishment and management of pre-schools;

- Libraries;
- Drinking water supply;
- Burials, cremations etc.;
- Public conveniences;
- Children's services;
- Community safety;
- Arts and recreation;
- Public fairs and ceremonies;
- Sports;
- Environmental health, awareness and services;
- Parks and landscape development;
- Slaughtering of animals;
- Street lights; and
- Sign boards and street advertisements.

5. Human Resource at MC:

5.1 Municipal Corporation organogram



5.2 Administrative Setup

Deputy Commissioner/Administrator
Muhammad Saif Anwar Jappa
Joining Date: 8th November, 2019
0544-9270099



Chief Officer & MO (Regulation-addl charge)

Inam ur Rahim

Qualification: B.A.

Joining Date: 18-02-2019

0544-9270098



Municipal Officer (Finance)

Abdul Qadeer Khan,

Date of Joining: 13-05-2019

Qualification: B.A.

Joining Date: 11th May, 2019.

0544-9270299



Municipal Officer (Infrastructure)

Shahzad Tufail.

Joining Date: 19-11-2019.

Qualification: B.Tech (Hon)(Civil).

0544-9270054



Municipal Officer (Planning)

Joining Date: 19-11-2019

Qualification: BSc in Town Planning.

0544-9270427

Date of Joining: 23-05-2019

Office No: 067-9200138



5.3 Human resource Available at MC

Vacancy Analysis-Section Wise			
Section	Sanctioned	Filled	Vacant
Chairman	5	5	0
Vice Chairman	2	2	0
Chief Officer	10	9	1
Municipal officer (R)	13	13	0
Municipal officer (I&S)	355	266	89
Municipal officer (P)	6	5	1
Municipal Officer (F)	24	21	3
Total	415	321	94

MC schedule of establishment is attached as Annex

6 Annual Budget:

Abstract of annual budget of Municipal Corporation Jhelum is as under:

Municipal Corporation Jhelum					
Financial Position					
Annual Budget Estimates For The Year 2019 – 2020					
		Actual 2017 - 2018	Estimated 2018 - 2019	Actual 2018 - 2019	Estimated 2019 – 2020
Opening Balance as on July 1st.		-	50,000,000	45,122,413	117,656,983
Expected Income	Local Receipt	369,724,855	275,014,000	211,502,469	282,197,700
	PFC Award Grant	61,582,800	84,801,000	69,967,300	181,807,300
Total		431,307,655	409,815,000	326,592,182	581,661,983
Expected Expenditure	Current / Non Development Expenditure	21,296,067	237,126,503	145,483,909	282,930,272
	Development Expenditure	-	132,305,379	3,214,619	252,091,000
	Development Liabilities (Prev. Year)	-	15,946,859	6,111,653	2,400,000
Total		21,296,067	385,378,741	154,810,181	537,421,272
Closing balance as on June 30th.		410,011,588	24,436,259	171,782,001	44,240,711

The income & expenditure statements are attached as Annex - A

6.1 Development expenditure

The expenditure incurred on the development projects from year 2013-14 to the current financial year & source of financing is given below

(All figures in million Rs)

Description	2013-14	2014-15	2015-16	2016-17	2017-18
Expenditure on Development Projects	29.059	7.277	41.317	20.887	49.508
Source of Financing of Development Projects	source revenue	ADP grant	PFC share	PPP	Others (Specify)
	✓	-	✓	-	-
Expenditure on O&M of services and revenue generated					
Water supply					
Total O&M cost	18.63	20.36	22.14	20.47	23.89
Revenue earned	4.74	2.9	2.84	0.81	7.01
% revenue earned vs O&M Charges	25.44%	14.24%	12.83%	3.96%	29.34%
Subsidy injected	13.89	17.46	19.3	19.66	16.88
Sewerage/drainage					
Total O&M cost	2.940	3.130	3.160	3.070	3.550

Revenue earned	2.020	2.200	2.040	0.980	3.300
% revenue earned vs O&M Charges	68.71 %	70.29 %	64.56%	31.92%	92.96%
Subsidy injected	0.92	0.93	1.12	2.09	0.25
Solid waste management					
O&M cost	89.930	75.810	73.500	80.000	102.140
Revenue earned	Nil	Nil	Nil	Nil	Nil
Subsidy injected	89.930	75.810	73.500	80.000	102.140
Parks					
O&M cost	0.98	1.08	1.19	1.31	1.44
Revenue earned	Nil	Nil	Nil	Nil	Nil
Subsidy injected	0.98	1.08	1.19	1.31	1.44
Slaughter houses					
O&M cost	0.500	0.560	0.620	0.680	0.750
Revenue earned	0.050	0.650	1.240	1.360	1.270
Subsidy injected (-) Income (+)	0.450	-0.090	-0.620	-0.680	-0.520
Street Light					
Total Expenditure	4.670	5.240	5.480	5.390	3.820
Revenue earned	The				

7 Development Projects

The Annual Development Plan initiated by Municipal Corporation Jhelum in the current and preceding years is as under:

Summary of ADP Projects of Municipal Corporation Jhelum				
Sr. No	Financial Year	No. of Total Projects	Approved Cost (PKR)	Status
1	2017-18	55	22.44379	Completed
2	2018-19	Nil	Nil	

List of Approved Projects for the last 03 Years of Municipal Corporation, Jhelum is attached at Annex-B

8. Municipal Services Delivery Detail

8.1. Water supply system

8.1.1. Water supply hours

On an average MC is supplying 05 hours of water to households daily as per given schedule

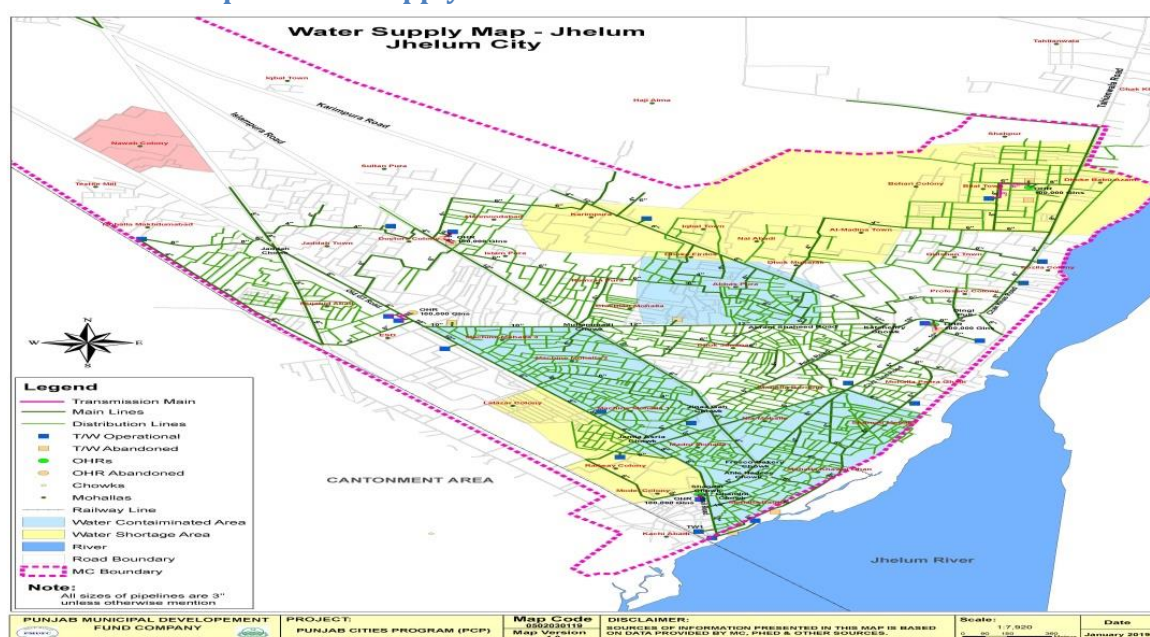
Water supplied hours			
Morning	Midday	Evening	Total
2	2	2	6

8.1.2. Total coverage of the city

The total area coverage of water supply in the city is 57% out of which 6% area falls under water shortage and 13% under the water contamination. Rest of 43% area is unserved. The detail of water connections and percent connected are given as under;

No. of connections				%age connected
Domestic	Commercial	Industrial	Total	
9924	80	Nil	10,004	35%

8.1.1. Map of Water Supply



8.1.2. Tariff structure

The consumer connections are not metered and hence water. The water rates are given below;

Tariff Rates per month		
Domestic	Com.	Ind.
Rs. 100	Rs. 500	Nil

8.1.3. Water filtration plants:

Total 12 filtration plants are being maintained by MC in the city to supply potable water to the inhabitants. All are working in good condition and no need for repair of its component to supply potable water to the inhabitants of the city.

8.1.4. The water source & storage

The city has sweet sub soil water which is fit for human consumption. Jhelum River is flowing at the eastern and southern periphery of the city. Tube wells have been installed at different points in the city to harness the deep underground fresh water. Water from some tube wells is being pumped into overhead reservoirs constructed at different locations of the city wherefrom it is fed to the distribution system. Three overhead reservoirs are currently non-functional and hence water is directly being supplied into distribution system.

8.1.5. Manpower deployment

Slot	Sanctioned strength	Existing strength	Vacant post	Manpower on daily wages	Total manpower deployed	Additional MC demand
Tube-well operators	18	18	0	0	18	17
Chowkidars	5	5	0	0	5	0
Electricians	2	1	1	0	1	2
Plumbers	3	2	1	0	2	4
Plumber helpers	0	0	0	0	0	4
Baildar	1	1	0	0	1	1
Total	29	27	2	0	27	28

8.2. Solid waste management

8.2.1. Solid waste Generation & Disposal

The solid waste management efficiency along with present dumping sites is given below;

Total waste generated	70 Tons
Waste disposal	40 Tons
% age efficiency	57%

8.2.2. Equipment & Machinery

Under mentioned collection and transportation machinery is available with MC to handle the solid waste.

S.N	Equipment/machinery	Total available Nos.	Working but requiring repair (Nos)
1	Top of Form Arm Roll Truck Bottom of Form	0	0
2	Combined sucker and jetter machines	0	0
3	Front blade tractors	1	1
4	Front end loaders	1	1
5	Generator	0	0
6	Hydraulic Trolleys with Tractor	4	1
7	Hydraulic Trolleys without Tractor	5	0
8	Jetter Machines	1	0
9	Mechanical Sweepers	1	0

10	Mini dumper riksha	0	0
11	Steel containers	0	0

The existing machinery is neither sufficient nor cost effective and efficient giving rise to low efficiency of collection and disposal of the waste and as a result of that MC is facing higher waste management cost as well as complaints regarding the insanitary conditions in the city. Efficient and cost effective machinery is needed to increase the efficiency of collection and transportation for improving the sanitary conditions and lowering down the operational and maintenance costs.

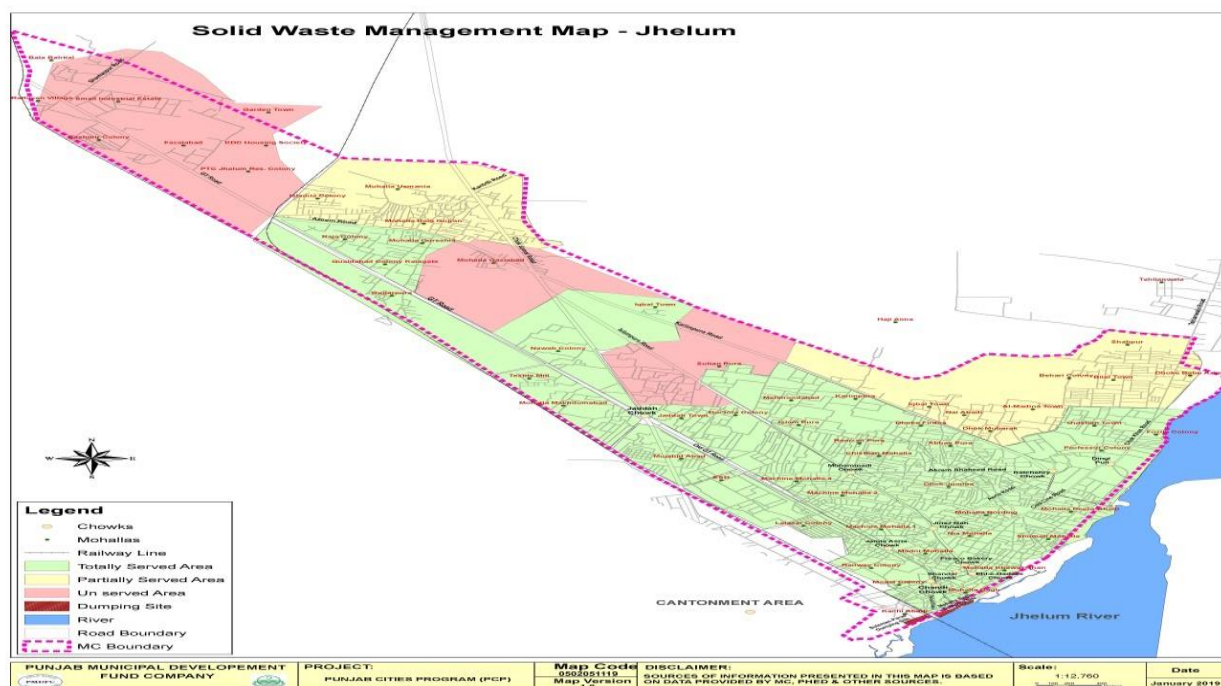
8.2.3. Manpower Deployed

The manpower deployed for collection, transportation and disposal of the solid waste is given in the table below. As indicated by MC Officers, this manpower is not sufficient to serve the entire city at the given standards. Additional manpower required by the MC is also given here.

Slot	Sanctioned strength	Existing strength	Vacant posts	Manpower on daily wages	Total man power deployed	Additional MC demand
Sanitary workers	242	158	84	39	197	52
Vehicle drivers	10	8	2	0	8	5
Supervisors	7	6	1	0	6	0
Sanitary inspectors	0	0	0	0	0	1
Other	1	1	0	0	1	0
Total	260	173	87	39	212	58

8.2.4. Coverage Detail

The entire city is not served with solid waste collection and disposal. 35% area of the city is fully served, 40% is partially served and 25% is un-served as marked on the map. In partially served areas service is rendered intermittently depending upon availability of manpower and transportation machinery. The detail of these areas is given below.



a) Partially served areas

No regular service is rendered in the under mentioned areas. The main complaints are attended by sending the machinery & labor once or twice a week.

1	Dhoke Mubarak	2	Al_Madina Town	3	Iqbal Town
4	Nai Abadi	5	Behari colony	6	Bilal Town
7	Dhoke Babu Azam	8	Shahpur	9	Mohallah Kala Gujran
10	Islamia colony	11	Usmania	12	Kantrili Road

b) Unserved areas

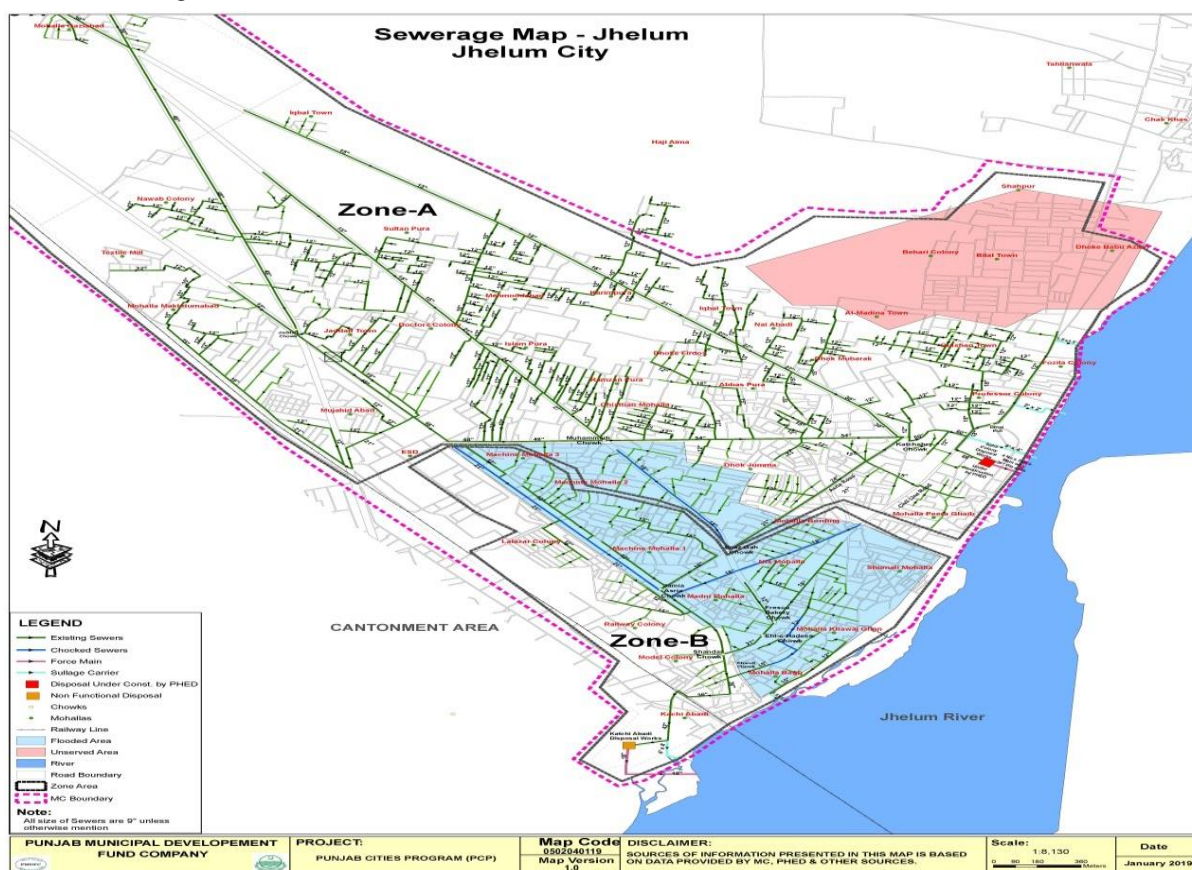
Under mentioned areas are still unserved;

1	Sultanpura	2	Mohallah Gaziabad	3	PTC Residential Colony
4	Fazalabad	5	KDC Housing	6	Kashmir Colony
7	Garden town	8	Rathiyan village	9	Industrial estate
10	Bala Badial				

8.3. Sewerage

8.3.1. Coverage

The city has 70% coverage of sewerage system but only the main and branch sewers have been laid and the lateral sewers have been provided in small area of the city. The old city is mostly served by the surface drains discharging in main and branch sewers leading to Jhelum river creek.



8.3.2. Existing pumping / disposal stations

The detail of each pumping station already working in the city is given below;

Location	Nos of collect. Tanks	Nos of pumps	Discharge each (cusecs)	Total discharge (cusecs)	Motor BHP	Working status	Force main /S. carrier			Ultimate disposal
							Size (inch)	Length (ft)	Cond.	
Suleman Paras	02	02		16.0	40	Non Functional	18" dia	300'	damage	Jhelum River
		02	4.0							
Sahil colony	02	04	10	40	100	Under construction	20" dia	4x400'	Newly laid	Jhelum River

8.3.3. Sucker & jetting machines

01 No sucker and 01 No jetting machines are being used by MC to remove blockades and cleaning of sewers. The sucker machine is quite old and requires repairs along with supply of suction pipes. However, jetting machine is working in good condition.

8.3.4. Manpower deployed

The manpower deployed presently for the operation & maintenance of the system is given below against the total regular strength of 52 persons.

Pump operators	2
Baildars	1
Supervisors	0
Sewer men	10
Total	13

MC is demanding additional manpower because of increase in population as they are serving those areas in the city which are not included within the municipal boundary.

8.3.5. Tariff structure

All the sewer connections are not being charged. Only new connections being installed now are charged at the rate of Rs 200 per connection per annum.

8.3.6. Drainage zones.

The city has been divided in 2 zones in respect of the waste water drainage. Each zone with its coverage is described below;

a) Zone-1

Most of the area of this zone covering major part of the main city and Kala Gujran, is currently being drained through a 66" dia outfall sewer terminating into a main sullage carrier near Sahil Colony on right bank of the River Jhelum, under gravity which is discharging waste water directly in Jhelum River.

During floods in the River, the back lash of water surcharges the entire sewerage system in this zone causing flooding on to the roads and silting up of sewers. Hence a new disposal station has been constructed near Sahil colony by PHED department, which is used to pump the waste water in to Jhelum River by closing the sluice gate of gravity flow during River flood duration.12

Some areas of the zone-A comprising of Dhok Jumma are served by 18” dia old sewer line which has been choked from Mohammadi Chowk to Jinnaz Gah Chowk and hence needs replacement

b) Zone-2

The areas in this zone are served by an outfall sewer of 42” dia terminating into a disposal work in Salman Paras. The pumping machinery in this disposal work has outlived its life and is no longer in use. The disposal works has been bypassed through a sillage carrier which is discharging directly into the River Jhelum.

The action has given rise to surcharging of sewers resulting in choking of some branch sewers and flooding of the roads in these areas. Suleman Paras Disposal is currently non-functional and needs complete rehabilitation & replacement of machinery.

The choked sewers along civil lines road, main sewer from ESD to Jamia Asria Chowk & main line near Ahle Hadees Chowk need replacement. Further some very old sewers in Shumalli Mohalla, Mohalla Khawajgan, Nia Mohalla & Madni Mohalla) have been choked and need replacement as well. All these sewer lines have been marked in blue in the descriptive maps.

The city has storm water drainage problems and construction of storm water drains is needed along many roads to drain off the storm water properly.

8.3.7. Sewer lengths

The approximate length of old sewers is given below;

Sewer dia. (inch)	9	12	15	18	21	24	27	Total length in Km
Length in Km	15.0.0	24	10	8	10	2.0	1.5	
Sewer dia (inch)	30	33	36	42	48	54	66	81.75 Km
Length in Km	3.0	1.0	0	5.0	1.5	0.5	0.2	

8.4. Streetlight

MC Jhelum has street lights on major roads and Mohallahs

8.4.1. Street lights on Major roads:

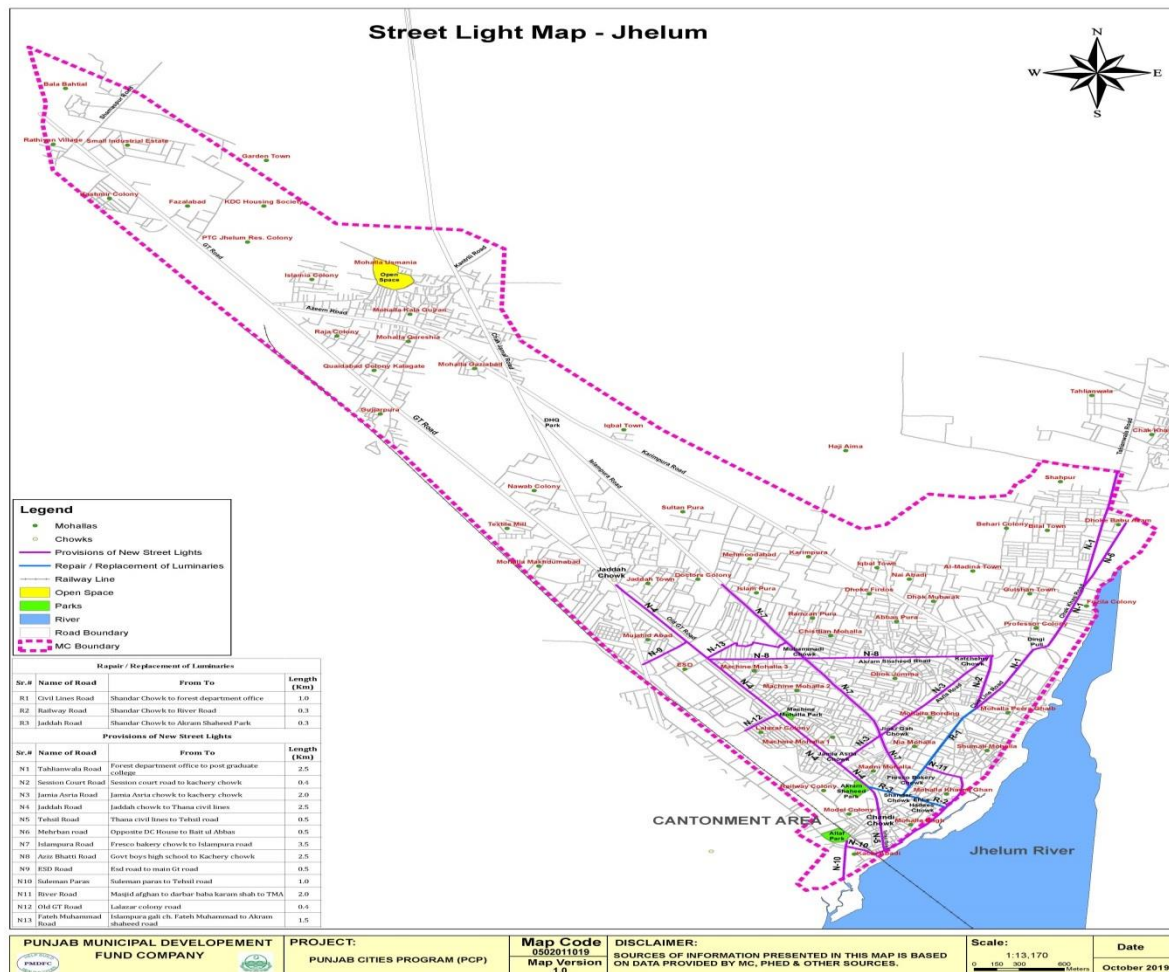
Some roads in the city have been provided with street light. The detail of these installations is given below;

S.N.	Name of Road/Street	Type of luminaries	No. of Lights	Length (Km)	Proposed type of
1	Civil Lines Road	Sodium	75	1.0	LED 100 W
2	Railway Road	Sodium	20	0.3	LED 100 W
3	Jada Road	Sodium	15	0.25	LED 100 W

8.4.2. Ward wise detail of existing street lights

Energy saver bulbs are being used instead of LED lamps which are fulfilling the requirements in different Mohallas.

Ward No	Area	Energy Saver 24 to 30 W	Operational Status	Poles types WAPDA pole /Street light pole
1	Dhok Firdous, Dhok Mubarak	150	58	WAPDA pole
2	Bismillah market, Bilal town	50	35	WAPDA pole
3	Dhok Rajgaan	80	38	WAPDA pole
4	Khawaja colony	70	53	WAPDA pole
5	Mohallah Peer Ghaib	75	53	WAPDA pole
6	Nia Mohallah	100	52	WAPDA pole
7	Mohallah Bagh, Mohallah	95	50	WAPDA pole
8	Madni Mohallah	110	70	WAPDA pole
9	Almarkaz road	23	-	WAPDA pole
10	Railway colony,	63	43	WAPDA pole
11	Karam market, Machine Mohallah	105	57	WAPDA pole
12	Mohallah Mujahidabaad	16	13	WAPDA pole
13	Mohallah Mujahidabaad, ESD	15	0	WAPDA pole
14	Sultan pura	15	11	WAPDA pole
15	Islam pura, Mohallah Jara, DHQ	21	0	WAPDA pole
	Total	988	533	



8.4.3. Expenditure on street lights

Under mentioned expenditure on the Operation & Maintenance of the existing street lights has been incurred by MC Jhelum during the last 5 years. This includes the energy cost, manpower cost and cost of repairs and replacements.

(All figures in million Rs)

Year	2013-14	2014-15	2015-16	2016-17	2017-18
O&M Expenditures	4.670	5.240	5.480	5.390	3.820

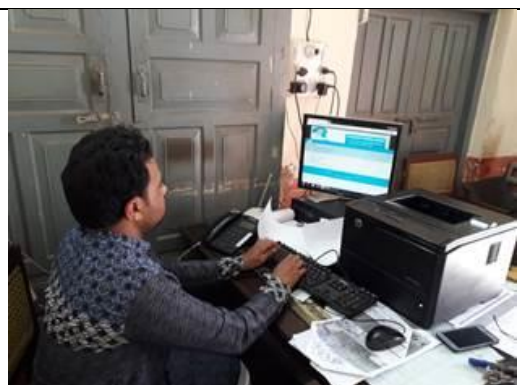
The expenditure is quite low as the energy cost is lesser because of energy saver luminaries.

9. Complaint Management

Municipal Corporation Jhelum has established a centralized complaint cell for complaints registration, its tracking and resolution. The primary objective of establishing complaint cell was to enhance MC's efficiency in addressing citizens' and building confidence of citizens.

The complaint cell has been provided with telephone line to facilitate the complaint registration over the phone without walking in to the office. Every complaint, whether received in writing or verbally, is recorded in the software by a designated complaint cell in charge. Each recorded complaint generates a unique number already printed on the complaint slip. The complainant also receives the complaint number for the follow up, if required. Once the complaint is resolved by the relevant staff, he returns his part of the complaint slip to the complaint cell with his remarks and the complaint cell in charge updates the status of complaint in the software accordingly. The complainant may inquire the status of his complaint at any time just by calling the complaint registration office with reference to his complaint number. This process ensures the registration and tracking of all the complaints, thus keeping MC staff accountable to the MC management as well as the citizens.

Complaints: Received Summary Year – 2018-19	
Sector	Complaints
Water Supply	57%
Sewerage and Drainage	55%
Streetlight	-
Solid waste	47%
Percentage Received	55%



10. MC Website (www.mcjhelum.lgpunjab.org.pk)

Municipal Corporation Jhelum has also developed its website for dissemination of information for general public. The information contain all major categories of



information for citizen's interest like information about the officers with their telephone numbers, budget detail, Development projects, news and events

11. MC Response to the Requests of Citizens under RTI Act 2013

No request received from any citizen during the current year

**SUMMARY OF RESPONSE TO CITIZENS REGARDING RTI REQUESTS
(2018-19)**

MC Section	No. of Requests Received	No. of Requests Attended	Average No. of Days/ Time span to Attend Request	No. of Requests Refused/ Not Fit for Sharing Information	No. of Requests Forwarded to Other Departments for Seeking Information	Total No. of Requests In Progress	Total No. of Requests Pending	Citizen's Satisfaction Feedback	Remarks
Chief Officer	x	x	x	x	x	X	x	x	x
MO (I&S)	x	x	x	x	x	X	x	x	x
MO (F)	x	x	x	x	x	x	x	x	x
MO (P)	x	x	x	x	x	x	x	x	x
MO (R)	x	x	x	x	x	x	x	x	x
Total	x	x	x	x	x	x	x	x	x

Human Resource Detail

Section Name	Name of Post	BPS	Vacancy detail(Nos.)			Service Type(Nos.)			Recruited at (Yes)		Remarks
			Sanctioned	Filled	Vacant	Permanent	Contractual	Daily wager	MC	Provincially	
Chairman	Chairman	Fix	1	1	0	1	0	0	✓		
	Steno	15	1	1	0	1	0	0	✓		
	Junior Clerk	11	1	1	0	1	0	0	✓		
	Driver	4	1	1	0	1	0	0	✓		
	Naib Qasid	2	1	1	0	1	0	0	✓		
Naib Chairman	Vice Chairman	Fix	1	1	0	1	0	0	✓		
	Naib Qasid	3	1	1	0	1	0	0	✓		
Chief Officer	Chief Officer	18	1	1	0	1	0	0	<input type="checkbox"/>	✓	
	Senior Clerk	14	1	1	0	1	0	0	✓		
	Computer Operator	12	1	0	1	0	0	0	✓		
	Driver	4	1	1	0	1	0	0	✓		
	Naib Qasid	1	1	1	0	1	0	0	✓		
	Junior Clerk	11	3	3	0	3	0	0	✓		
	Naib Qasid	3	1	1	0	1	0	0	✓		
MO-I	MO-I	17	1	0	1	0	0	0	<input type="checkbox"/>	✓	Additional Charge with Sub Eng.
	Sub Engg	14	3	2	1	2	0	0	✓	<input type="checkbox"/>	
	Senior Clerk	14	1	0	1	0	0	0	✓		
	Driver	4	1	1	0	1	0	0	✓		
	Naib Qasid	3	1	1	0	1	0	0	✓		
	Chowkidar	2	1	1	0	1	0	0	✓		

Section Name	Name of Post	BPS	Vacancy detail(Nos.)			Service Type(Nos.)			Recruited at (Yes)		Remarks
			Sanctioned	Filled	Vacant	Permanent	Contractual	Daily wager	MC	Provincially	
MO - P	MO - Planning	17	1	1	0	1	0	0	<input type="checkbox"/>	<input checked="" type="checkbox"/>	
	Building Inspector	14	1	0	1	0	0	0		<input checked="" type="checkbox"/>	
	Draftman	13	1	1	0	1	0	0	<input checked="" type="checkbox"/>		
	Senior Clerk	14	1	1	0	1	0	0	<input checked="" type="checkbox"/>		
	Junior Clerk	11	1	1	0	1	0	0	<input checked="" type="checkbox"/>		
	Naib Qasid	2	1	1	0	1	0	0	<input checked="" type="checkbox"/>		
MO- F	MO-F	17	1	0	1	0	0	0	<input type="checkbox"/>	<input checked="" type="checkbox"/>	Addit Charge with MO-F (DC-Jhelum)
	Computer Operator	12	1	0	1	0	0	0	<input checked="" type="checkbox"/>	<input type="checkbox"/>	
	Rent Inspector	14	1	1	0	1	0	0	<input checked="" type="checkbox"/>	<input type="checkbox"/>	
	Accountant Clerk	11	2	2	0	2	0	0	<input checked="" type="checkbox"/>		
	Chowkidar	3	1	1	0	1	0	0	<input checked="" type="checkbox"/>		
	Naib Qasid	3	1	1	0	1	0	0	<input checked="" type="checkbox"/>		
	Veterinary Doctor	Fix	1	1	0	0	0	0	<input checked="" type="checkbox"/>		
	Sewer Clerk	11	1	1	0	1	0	0	<input checked="" type="checkbox"/>		
	Water Rate Clerk	11	1	1	0	1	0	0	<input checked="" type="checkbox"/>		
	Octroi Staff	14	14	13	1	14	0	0	<input checked="" type="checkbox"/>		
MO - R	MO - Regulation	17	1	1	0	1	0	0	<input type="checkbox"/>		
	Encroachment Insp	9	1	1	0	1	0	0	<input checked="" type="checkbox"/>		
	Librarian	11	1	1	0	1	0	0	<input type="checkbox"/>		

Section Name	Name of Post	BPS	Vacancy detail(Nos.)			Service Type(Nos.)			Recruited at (Yes)		Remarks
			Sanctioned	Filled	Vacant	Permanent	Contractual	Daily wager	MC	Provincially	
	Junior clerk	11	1	1	0	1	0	0	✓		
	Naib Qasid	3	1	1	0	1	0	0	✓		
	Encroachment Staff	3	3	3	0	3	0	0	✓		
	Encroachment Staff	2	2	2	0	2	0	0	✓		
	Encroachment Staff	1	2	2	0	2	0	0	✓		
	Legal Advisor	Fix	1	1	0	1	0	0	✓		
MO-S	MO-S	17	1	0	1	0	0	0	<input type="checkbox"/>	✓	Addit Charge
	Driver	4	1	1	0	1	0	0	✓	<input type="checkbox"/>	
	Plumber	3	1	1	0	1	0	0	✓	<input type="checkbox"/>	
	Sewer man	1	20	10	10	10	0	0	✓	<input type="checkbox"/>	
	Chowkidar	3	1	1	0	1	0	0	✓	<input type="checkbox"/>	
	Tubewell Operator	3	6	6	0	6	0	0	✓	<input type="checkbox"/>	
	Mobile Pump Operator	4	1	1	0	1	0	0	✓	<input type="checkbox"/>	
	Mobile Pump Operator	3	1	1	0	1	0	0	✓	<input type="checkbox"/>	
	Plumber	5	1	0	1	0	0	0	✓	<input type="checkbox"/>	
	Plumber	3	1	0	1	0	0	0	✓	<input type="checkbox"/>	
	Tubewell Operator	4	1	1	0	1	0	0	✓	<input type="checkbox"/>	
	Baildar	3	1	1	0	1	0	0	✓	<input type="checkbox"/>	
	Tubewell Operator	1	11	11	0	11	0	0	✓	<input type="checkbox"/>	

Section Name	Name of Post	BPS	Vacancy detail(Nos.)			Service Type(Nos.)			Recruited at (Yes)		Remarks
			Sanctioned	Filled	Vacant	Permanent	Contractual	Daily wager	MC	Provincially	
	Chowkidar	1	3	3	0	3	0	0	✓	<input type="checkbox"/>	
	Driver	4	1	1	0	1	0	0	✓	<input type="checkbox"/>	
	Mali	3	1	1	0	1	0	0	✓	<input type="checkbox"/>	
	Mali	1	8	8	0	8	0	0	✓	<input type="checkbox"/>	
	guard / choawkidar	1	1	1	0	1	0	0	✓	<input type="checkbox"/>	
	Muhafiz Qabristan	3	1	1	0	1	0	0	✓	<input type="checkbox"/>	
	Head Fireman	8	2	2	0	2	0	0	✓		
	Fireman	5	12	12	0	12	0	0			
	Fireman	3	1	1	0	1	0	0	✓		
	Driver Fire Brigade	8	1	1	0	1	0	0	✓		
	Road Ruller Driver	7	1	0	1	0	0	0	✓		
	Driver Fire Brigade	7	2	2	0	2	0	0	✓		
	Driver	5	1	1	0	1	0	0	✓		
	Electrician	9	1	1	0	1	0	0	✓		
	Electrician	3	1	1	0	1	0	0	✓		
	Helper Electrician	1	2	2	0	2	0	0	✓		
	Chief Sanitary Inspector	11	1	1	0	1	0	0	✓		
	Sanitary Supervisor	5	6	6	0	6	0		✓		
	Tractar Driver	5	10	3	7	3	0	0	✓		
	Sanitary	1	207	142	65	88	0	54	✓		

Section Name	Name of Post	BPS	Vacancy detail(Nos.)			Service Type(Nos.)			Recruited at (Yes)		Remarks
			Sanctioned	Filled	Vacant	Permanent	Contractual	Daily wager	MC	Provincially	
	Worker										
	Sanitary Worker	2	8	8	0	8	0	0	✓		
	Sanitary Worker	3	27	27	0	27	0	0	✓		
	Qabar Band	Fix	2	2	0	2	0	0	✓		
		Total	415	321	94	267	0	54			

List of Approved Projects of the last 03 Years

Sr.No.	Name of Project	Gestation Period	Approved Cost (PKR)	Status	Physical Progress (%)	Remarks
Year 2017-18 ADP M.C. Jhelum						
1.	Const: of Street/Drain From House Raja Maqsood to House Rana Orangaib Advocate Ward # 2.	Two Months	400000	Completed	100%	
2.	Const: of Street/Drain H/O Raja Asif to Mosque Muqaram Ward # 5.	Two Months	400000	Completed	100%	
3.	Const: of Street/Drain & P/L Sewerage Pipe Line Umair Pasha Ward # 5.	Two Months	400000	Completed	100%	
4.	Const: of Street (Main Street) Mohallah Pira Ghaib Ward # 6.	Two Months	400000	Completed	100%	
5.	P/L Sewerage Pipe Line From House Hafeez Butt, Qabristan Chowk to Shop Ward # 10.	Two Months	400000	Completed	100%	
6.	Const: of Street / Drain in front House Doctor Afzal Mohallah Baba Mehdi Shah. Const: of Drain Near House Rafique Lalay wali Christian Colony. Const: of Street / Drain From House Matloob to Manzoor (Late) Dhoke Jumma Ward # 11.	Two Months	516273	Completed	100%	
7.	Const: of Street/Drain House Pervaiz to Yousaf & Const: of Street Haji Sultan Machine Mohallah Ward # 14.	Two Months	400000	Completed	100%	
8.	Const: of Street/Drain Malik Rashid wali / Street Maqbool Khokhar wali Ward # 15.	Two Months	400000	Completed	100%	
9.	Const: of Street/Drain H/O From H/O Tariq to Sheikh Ehsan & Const: of Culvert House Naseer Khan & P/F Street Lights complete M.M.No.2. Ward # 18.	Two Months	400000	Completed	100%	
10.	Const: of Street / Drain /Sewerage Pipe Line House Mushahid Hussain to House Contractor Aziz Ward# 19.	Two Months	400000	Completed	100%	
11.	Const: of Street/Drain Kashmir Colony From Dera Peer Maroof to G.T.Road (Aziz Shakir Councillor). Ward # 22.	Two Months	400000	Completed	100%	
12.	Const: of Street/Drain Kala Gujran Ward # 26 (Nasir Inayat Councillor).	Two Months	400000	Completed	100%	
13.	Const: of Street/Drain CH. Ghulam Ahmed Road Kala	Two Months	400000	Completed	100%	

Sr.No.	Name of Project	Gestation Period	Approved Cost (PKR)	Status	Physical Progress (%)	Remarks
	Gujran (Zafar Sahib) Ward # 28.					
14.	Const: of Street/Drain H/O From House Khuram Shahzad to Talib Hussain Jada Ward # 29.	Two Months	400000	Completed	100%	
15.	Const: of Street Ali Chakki wali to House Rasheed Qasai & Const: of Street/Drain House Iqbal to Mirza Murtashid Mohallah Chistian Ward # 30.	Two Months	400000	Completed	100%	
16.	Const: of Street/Drain Subedar Abdur Rauf to Abdul Hameed Fuji Ward # 31.	Two Months	400000	Completed	100%	
17.	Const: of Street/Drain H/O Ejaz Baig to CH. Zafar Ward # 34.	Two Months	400000	Completed	100%	
18.	P/L of Sewerage Pipe Line 12" dia. from house Naseem to Sabir Hussain & Tabbasum wali Street, Ward # 35.	Two Months	400000	Completed	100%	
19.	Const: of Street/Drain Rohtas Road to House Malik Arif Ward # 36.	Two Months	400000	Completed	100%	
20.	Construction of Boundary Wall M.M.#3 (Saleem Shahid Bhatti Councillor)	Two Months	220000	Completed	100%	
21.	Const: of Street/Drain H/O Abdul Qayyum to Sagheer Ahmed Bhatti Opposite Baba Mehdi Shah (Ch.Maqbool Vice Chairman) Ward # 12.	Two Months	859570	Completed	100%	
22.	Const: of Culvert Iqbal Library Road.	Two Months	200000	Completed	100%	
23.	Const: of Street / Drain Bala Gujran (CH. Sarfraz Councillor)	Two Months	400000	Completed	100%	
24.	Const: of Drain Bagh Mohallah C/O Jehangir.	Two Months	641000	Completed	100%	
25.	Const: of Street/Drain Dhoke Jumma (Khursheed Sahib Wali)	Two Months	400000	Completed	100%	
26.	Const: of Street/Drain H/O From House Naeem-ur-Rehman to Mehmood Dar Mohallah Islamia School.	Two Months	400000	Completed	100%	
27.	P/L of Water Supply Pipe Line & Const: of Street/Drain Jameel Ahmed wali Mohallah Khansaman.	Two Months	400000	Completed	100%	
28.	Const: of Street/Drain H/O Main Bazar (Nadra Lady Councillor)	Two Months	400000	Completed	100%	
29.	Const: of Street/Drain Qayyum Butt to Bao Kala & CH.	Two Months	400000	Completed	100%	

Sr.No.	Name of Project	Gestation Period	Approved Cost (PKR)	Status	Physical Progress (%)	Remarks
	Aslam wali street Jada.					
30.	Const: of Street/Drain Tariq Butt wali Model Colony.	Two Months	400000	Completed	100%	
31.	P/L of Sewerage Pipe Line 12" dia. Baba Jada Road C/O Shaheen.	Two Months	400000	Completed	100%	
32.	Const: of Street Nia Mohallah (Mrs.Ifzaal Councillor)	Two Months	400000	Completed	100%	
33.	P/L Sewerage Pipe Line Kala Gujran (CH.Asif).	Two Months	400000	Completed	100%	
34.	Const: of Street/Drain Mohallah Karim Pura C/O Waqar Butt PA Ch.Lal Hussain MPA.	Two Months	400000	Completed	100%	
35.	Const: of Street/Drain Kala Gujran (Malik Kamran Jameel Councillor)	Two Months	400000	Completed	100%	
36.	Const: of Street/Drain & P/L Sewerage Pipe Line Shumali Mohallah (Shabaz Councillor).	Two Months	400000	Completed	100%	
37.	Const: of Street/Drain & P/L Sewerage Pipe Line Street Nursery Wali C/O Khursheed Butt Japan Property.	Two Months	400000	Completed	100%	
38.	Repair of Toilets Near Shandar Chowk Jhelum.	Two Months	313900	Completed	100%	
39.	Repair of Fire Brigade Portion M.C. Jhelum.	Two Months	150000	Completed	100%	
40.	Const: / Repair of Sheds & other allied works at Disposal Works M.C. Jhelum	Two Months	700000	Completed	100%	
41.	Construction of Pully Near Gumband Wali Masjid. Construction of Pully Near NADRA Office.	Two Months	800000	Completed	100%	
42.	Construction of Pully Near Sarafa Bazar Near River Road	Two Months	500000	Completed	100%	
43.	Construction of Pully Near Street Govt Girls High School # 1 Civil Line.	Two Months	400000	Completed	100%	
44.	Const: of Drain Near Shop Muhammad Ejaz Aima Jattan & Const: of Street Near Jinaza Gah.	Two Months	400000	Completed	100%	
45.	Const: of Nullah in front of Jamia Masjid Kashmir Colony G.T. Road.	Two Months	300000	Completed	100%	
46.	Construction of Street / Drain Bashir Ahmed Wali Street.	Two Months	200000	Completed	100%	
47.	Repair & Maintenance Water Supply Scheme M.C. Jhelum Electric Motor / Starter etc.	Two Months	250000	Completed	100%	
48.	Repair & Maintenance Water Supply Pipe Lines / Valves	Two Months	500000	Completed	100%	

Sr.No.	Name of Project	Gestation Period	Approved Cost (PKR)	Status	Physical Progress (%)	Remarks
	etc. Water Supply Scheme M.C. Jhelum.					
49.	Providing / Fixing of Iron Grill (Missing Points) From Railway Bridge to Shandar Chowk.	Two Months	193050	Completed	100%	
50.	Const: of Street/Drain From House Ashraf to Shoukat to Majeed New Madina Town Ward # 1.	Two Months	400000	Completed	100%	
51.	Const: of Nullah & P/L Sewerage Pipe Line From House Khan Maroof to House Danish to Pully Madina Town Ward # 4.	Two Months	400000	Completed	100%	
52.	Const: of Street/Drain CH. Iron Merchant Walay Kala Ward # 20.	Two Months	400000	Completed	100%	
53.	Construction of Street / Drain From Havali Mirza Javed to Mirza Nasir House Mohallah Hashmi Behari Colony Behind D.C. House.	Two Months	400000	Completed	100%	
54.	Const: of Street/Drain From Main Road to Zahid House Bilal Town.	Two Months	600000	Completed	100%	
55.	Const: of Pully / Nullah From Shop Raja Sheraz to Wall Govt. Boys High School Kashmir Colony.	Two Months	300000	Completed	100%	
Year 2017-18 Development Schemes LGDP / (DEVELOPMENT SCHEMES UNDER PUNJAB LOCAL GOVERNMENT DEVELOPMENT PROGRAM 2018)						
1.	Const: of Street / Drain Makhan Wali From House Rashid to Nazir Ward # 1.	Two Months	500000	Completed	100%	
2.	Const: of Street / Drain From House Haji Razzaq to Khan Baba Pan Shop, Behari Colony Bilal Town Street # 8 Ward # 3.	Two Months	500000	Completed	100%	
3.	Const: of Street / Drain Near Tableegh-ul-Islam School to Main Road Professor Colony Ward # 5.	Two Months	500000	Completed	100%	
4.	Const: of Street / Drain (Main Road) From House Sajid Kaleem to Zubair Karyana Store Pira Ghaib Ward # 6.	Two Months	500000	Completed	100%	
5.	Const: of Street / Drain Tahlee Wali Street to Main Road Shumali Mohallah Ward # 7.	Two Months	500000	Completed	100%	
6.	P/L of Sewerage Pipe Line River Road From Tankki Wali Street to Sarafa Bazar, Jhelum Ward # 8.	Two Months	500000	Completed	100%	

Sr.No.	Name of Project	Gestation Period	Approved Cost (PKR)	Status	Physical Progress (%)	Remarks
7.	Const: of Main Road From Masjid Gumband Wali to Chowk Ahl-Hadees Ward # 9.	Two Months	500000	Completed	100%	
8.	Construction of Street / Drain Koocha Qammar Din to Road Nia Mohallah & Const: of Street From House Aashiq to House Al-Mumtaz Bakers Madni Mohallah Ward # 9.	Two Months	500000	Completed	100%	
9.	Const: of Street / Drain CH. Arif Wali Near Utility Store Back Side & Const: of Street Near Primary School Boarding Mohallah Ward # 10.	Two Months	500000	Completed	100%	
10.	Construction of Street / Drain Main Road to House Sagheer Ahmed Bhatti & Construction of Street / Drain CH. Maqbool Sahib Mehdi Shah Ward # 12.	Two Months	500000	Completed	100%	
11.	Const: of Street / Drain National Public School to House Nisar Ward # 12.	Two Months	500000	Completed	100%	
12.	P/L of Sewerage Pipe Line & Const: of Street / Drain Haveli Malik Tariq to CH. Adalat Ward # 12.	Two Months	500000	Completed	100%	
13.	Const: of Street / Drain Ehsan General Store to National Public School Ward # 13.	Two Months	500000	Completed	100%	
14.	Const: of Street / Drain Ex-Nazim Shakeel Shah to Road M.M.# 3. Ward # 14.	Two Months	500000	Completed	100%	
15.	Const: of Street / Drain Jameel Karyana Store to House Ashraf M.M.# 2 Ward # 15.	Two Months	500000	Completed	100%	
16.	P/L of Sewerage Pipe Line & Const: of Street Zahid Councillor Wali From House Muhammad Akram to Raza Hussain Ward # 16.	Two Months	500000	Completed	100%	
17.	Const: of Street / Drain From Khwaja Ikram House to Sheikh Hameed House, Model Colony Ward # 17.	Two Months	500000	Completed	100%	
18.	Construction of Street / Drain Street Sheikh Jehangir Wali From House Sheikh Jehangir to Sheikh Ehsan, M.M.No.2. Ward # 18.	Two Months	500000	Completed	100%	
19.	Construction of Street / Drain Street Dr. Hafeez Ex-Councilor Wali From House Dr. Hafeez to Main Road, Ward # 19.	Two Months	500000	Completed	100%	
20.	P/L of Sewerage Pipe Line From CH. Aftab Haveeli to	Two Months	500000	Completed	100%	

Sr.No.	Name of Project	Gestation Period	Approved Cost (PKR)	Status	Physical Progress (%)	Remarks
	Anwar Mashi House Mohallah Makhdoom Abad Ward # 20.					
21.	Const: of Street / Drain Dr. Zulfiqar to Malik Zahid & Const: of Street / Drain CH. Aslam Wali Ward # 21.	Two Months	500000	Completed	100%	
22.	Const: of Street / Drain From Poineer Public School to House CH. Niaz / Street Haji Azam Wali From House Kiyani to House Haji Azam / Street Razzaq Jaral Wali From House Razzaq Jaral to Arshad Shah, Kashmir Colony Ward # 22.	Two Months	500000	Completed	100%	
23.	Const: of Street / Drain Street Malik Masood Wali Mohallah Ghazi Abad From House Khan Vikky to Malik Yaseen Ward # 23.	Two Months	500000	Completed	100%	
24.	P/L of Sewerage Pipe Line & Const: of Street / Drain CH.Sarfraz Islamia Colony Kala Gujran Ward # 24.	Two Months	500000	Completed	100%	
25.	Construction of Street / Drain From Street Graveyard to House Malik Asgher Ali Mohallah Khalata Ward # 25.	Two Months	500000	Completed	100%	
26.	Const: of Street / Drain / Nullah Mohallah Dhakan Kala Gujran Near Mosque Hanfia Malik Mahmood / Javed Bhatti Street Ward # 25.	Two Months	500000	Completed	100%	
27.	Const: of Street / Drain From Masjid Kibriya to House Farooq Butt Mohallah Misri Kibriya Town Ward # 26.	Two Months	500000	Completed	100%	
28.	P/L of Sewerage Pipe Line Mohallah Ghulab Abad From Shop Dawood to Havali Muzaffar Ward # 28 Kala Gujran.	Two Months	500000	Completed	100%	
29.	Const: of Street / Drain From House Muhammad Ramzan to House Sikandar Mohallah Mehmood Abad & Const: of Street / Drain From House Mahi Noor Ellahi to House Shamoon Mohallah 786 & Const: of Street / Drain From Qasir Shopkeeper to Abbas House Aima Jattan Ward # 29.	Two Months	500000	Completed	100%	
30.	Const: of Street / Drain House Hafeez to Sharif Butt Near Bashir Cycle Works Nai Abadi Karim Pura Ward # 30.	Two Months	500000	Completed	100%	
31.	Const: of Street / Drain From House Raja Naseer to Road	Two Months	500000	Completed	100%	

Sr.No.	Name of Project	Gestation Period	Approved Cost (PKR)	Status	Physical Progress (%)	Remarks
	Mohallah Mehmood Abad Ward # 30.					
32.	Const: of Street / Drain Hafeez Shopkeeper to Malik Asghar Flats Mohallah Chistian Street # 2 Ward# 31.	Two Months	500000	Completed	100%	
33.	Const: of Street / Drain From House Muhammad Hussain to House Haji Ameen (Baba Eid Muhammad Late Wali Street) Ward # 32.	Two Months	500000	Completed	100%	
34.	P/L of Sewerage Pipe Line & Const: of Street / Drain From Saloomi Masjid to Asif Shafique Mohallah Abbas Pura Ward # 33	Two Months	500000	Completed	100%	
35.	Const: of Street / Drain House Fateh Muhammad to Behind Jamia High School Mohallah Islam Pura Ward # 34.	Two Months	500000	Completed	100%	
36.	Const: of Street / Drain House CH. Ajaib to Malik Hafeez Ward # 36 Rohtas Road Mirza Abad.	Two Months	500000	Completed	100%	

Municipal Corporation Jhelum																		
Form AR-32 see Rule 42(1)(b)																		
Monthly Compilation Of Receipts																		
For The Financial Year 2018 - 2019																		
Major Head	Minor Head	Detail Head	Head Title	Account Code	Jul	Aug	Sep	Oct	Nov	Dec	Jan	Feb	Mar	Apr	May	Jun	Total	
1	Tax revenue	Direct taxes	Taxes on income	Income tax	B01101	479,100	99,955	349,955	112,535	99,955	100,055	12,090	98,915	232,351	98,915	165,318	161,000	2,010,144
2	-	-	Property tax	UIFT / Share of net proceeds assigned to Districts/TMAs etc.	B01302	5,827,901	-	4,319,232	-	2,753,217	-	9,502,400	-	18,720,579	7,275,749	-	6,418,199	54,817,277
3	-	-	-	TTIP / Tax on Transfer of Immovable Property	B01313	3,262,264	4,300,770	3,636,280	5,428,463	4,414,106	3,968,537	5,498,540	3,872,945	4,567,562	7,539,261	7,082,643	2,896,155	56,467,526
4	Non-Tax Revenue	Receipts from civil administration and other functions. Miscellaneous receipts	Community services receipts	Collection of payments for services rendered (Staff Salary from Contractor)	C02705	-	-	-	-	-	-	-	3,000	-	-	-	-	3,000
5	-	-	Grants	Grant from Provincial Government PFC (Non Development)	C03683	-	5,833,275	5,833,275	5,825,275	5,825,275	5,825,275	5,833,275	5,833,275	5,833,275	5,833,275	5,833,275	11,666,550	69,967,300
6	-	-	Others	License fee (Profession Vacation & Trade)	C0388001	27,600	-	38,700	13,000	35,900	42,800	85,200	89,500	85,000	135,100	41,900	14,000	608,700
7	-	-	-	Wagon Stand fee	C0388018	63,760	64,160	65,040	80,320	66,640	71,200	65,480	65,480	59,720	62,560	53,300	31,640	749,300
8	-	-	-	Riksha/Motorcycle/ Bicycle Stand fee	C0388020	-	790,775	790,775	790,975	790,775	790,785	790,575	790,775	790,000	790,775	461,415	-	7,577,625
9	-	-	-	Fee for approval of Building/ Construction Plan	C0388027	695,761	1,428,341	289,370	1,295,331	649,815	682,654	1,262,652	651,191	1,110,035	1,092,885	1,203,487	373,658	10,735,180
10	-	-	-	Conversion Fee for change in building	C0388029	38,612	2,048,000	742,500	2,273,800	1,659,500	626,000	10,940,000	716,475	2,609,025	4,498,953	2,174,908	693,030	29,020,803
11	-	-	-	Fine for construction without approval of building plan	C0388030	-	-	-	-	20,000	8,000	5,000	-	-	-	-	33,000	
12	-	-	-	Fine for building violations (Irregular land use/ building use)	C0388031	-	-	-	-	-	-	5,000	-	-	-	-	5,000	
13	-	-	-	Fine for Encroachments	C0388034	2,000	-	-	-	-	-	-	8,850	-	-	400	-	11,250
14	-	-	-	Rent/ Lease income of Slaughter House	C0388041	-	-	-	-	-	-	-	-	-	-	117,200	117,200	
15	-	-	-	Fee for slaughtering of animals	C0388042	-	-	-	102,410	-	-	102,410	-	-	-	-	576,178	
16	-	-	-	Sale of slaughter house waste	C0388043	-	105,410	102,410	3,000	102,410	102,410	-	-	-	-	-	-	415,640
17	-	-	-	Receipts on account of sale of water - residential	C0388047	536,222	174,787	76,380	339,676	790,903	68,646	49,716	394,340	601,504	556,984	149,746	166,790	3,905,694
18	-	-	-	Receipts on account of sale of water - through tankers	C0388051	-	-	-	2,000	-	2,000	-	-	2,000	-	-	6,000	
19	-	-	-	Sewerage/Drainage Fee/ Charges/ Nali Tax	C0388054	230,006	75,094	62,448	292,942	279,018	91,050	57,950	260,484	221,726	254,123	30,928	100,972	1,956,741
20	-	-	-	Receipts from public latrines	C0388056	-	9,330	9,330	9,330	9,330	9,330	9,330	6,300	-	-	-	27,710	89,990
21	-	-	-	Sewerage / Drainage Arrear	C0388066	-	-	-	-	-	-	980	-	10,956	8,536	289,348	30,488	340,308
22	-	-	-	Registration/ Enlistment of Contractors	C0388071	-	205,000	38,000	15,000	-	-	-	-	-	-	-	-	258,000
23	-	-	-	Advertisement Fee on billboards/ hoardings	C0388076	-	-	-	-	-	-	825,840	-	412,920	-	-	-	1,238,760
24	-	-	-	Advertisement Fee on sign boards of shops/ commercial places	C0388077	1,100,000	1,370,542	1,329,458	1,350,000	1,350,000	-	-	412,920	-	-	412,920	4,294,632	11,620,472
25	-	-	-	Arrears of Shop	C0388079	2,170,136	342,090	459,470	325,393	330,522	252,958	330,600	236,840	411,492	-	50,000	143,344	5,052,845
26	-	-	-	Rent of municipal Property - Shops	C0388081	30,896	619,286	1,034,846	1,148,069	3,430,311	2,408,927	2,650,970	1,945,369	1,695,908	2,860,002	981,490	4,060,587	22,866,661
27	-	-	-	Rent of municipal Property - municipal urban land	C0388083	79,800	118,750	127,584	83,105	126,424	128,656	161,960	116,236	118,800	87,032	51,430	98,584	1,298,361
28	-	-	-	Road cutting charges	C0388086	28,320	27,800	40,300	31,260	26,140	40,850	6,480	36,080	11,920	23,960	94,500	-	367,610
29	-	-	-	Copying fee	C0388087	16,000	26,100	31,960	43,400	35,620	36,000	44,150	36,800	53,200	56,150	38,200	8,000	425,580
30	-	-	-	Machinery charges	C0388088	-	5,000	10,000	10,000	5,000	15,000	20,000	20,000	6,500	15,000	20,000	-	126,500
31	-	-	-	Others Miscellaneous Fee	C0388091	331,412	420	37,614	148,099	12,422	-	-	21,854	124,500	-	11,867	338,226	1,026,414
32	-	-	-	Magistral Fee (Fine and Penalties by Judicial Magistrate)	C0388092	-	4,000	1,000	500	17,000	38,000	40,200	-	44,700	12,300	1,500	-	159,200
33	-	-	-	Arrears of Water Rate (residential)	C0388093	150,467	76,332	95,226	429,180	41,040	29,820	42,378	120,768	91,404	-	674,490	6,052,175	7,803,280
34	-	-	-	NOC Fee	C0388096	-	-	-	-	-	-	-	-	17,500	20,000	-	37,500	
35	-	-	-	Miscellaneous Arrears	C0388098	-	-	-	-	-	-	-	-	2,700	-	-	2,700	
36	-	-	-	Marriage Certificate	C03883	53,500	100,500	115,340	113,500	147,680	144,000	190,100	179,102	175,160	148,500	112,500	40,500	1,520,382
37	Capital receipts	Recoveries of investment	Investment Receipts	Receipts from investment of Cash Balance by Local Govts (Bank Profit)	E01305	1,496,204	5,195	5,050	6,195	6,029	6,263	1,836,510	7,048	8,097	7,891	8,706	9,943	3,403,131
Total:						16,619,961	17,830,912	19,641,543	20,272,758	23,025,032	15,489,216	40,361,786	16,023,957	38,120,944	31,489,409	20,002,351	37,743,383	296,621,252

Municipal Corporation Jhelum

Form AR-30 see Rule 42(1)(a)

Monthly Compilation Of Expenditure

For The Financial Year 2018 - 2019

Major Head	Minor Head	Detail Head	Head Title	Account Code	Jul	Aug	Sep	Oct	Nov	Dec	Jan	Feb	Mar	Apr	May	Jun	Total	
1	Expenditure	Employee related expenses	Pay	Basic Pay Officers	A01101	133,012	164,629	428,490	199,078	197,765	171,817	171,817	173,805	180,020	180,020	220,314	326,748	2,547,515
2	-	-	-	Personal pay Officers	A01102	10,893	19,587	13,800	13,800	13,800	18,970	16,100	-	-	-	2,870	2,870	112,690
3	-	-	-	Basic Pay Staff	A01151	2,198,202	6,713,637	1,970,431	6,261,058	4,161,140	4,255,487	6,147,108	4,276,186	2,062,163	4,764,965	4,071,444	4,126,136	51,007,957
4	-	-	-	Personal pay Staff	A01152	1,710	-	1,410	4,530	4,530	3,300	8,450	16,875	7,100	9,728	3,780	32,207	93,620
5	-	-	Allowances	House rent Allowance	A01202	169,291	610,423	178,544	626,903	387,018	379,273	154,846	393,812	168,618	440,363	384,054	397,714	4,290,859
6	-	-	-	Conveyance Allowance	A01203	230,584	820,959	233,551	815,648	507,309	497,941	209,099	517,490	217,522	573,881	494,157	463,765	5,501,906
7	-	-	-	Washing Allowance	A01207	4,200	2,400	2,400	2,400	2,400	-	-	2,250	2,250	2,250	2,250	-	25,500
8	-	-	-	Medical allowance	A01217	176,361	682,233	176,499	676,241	414,641	407,886	161,403	414,218	168,061	466,561	395,776	395,731	4,535,611
9	-	-	-	Adhoc relief (2016) 10%	A0124407	184,084	541,452	208,089	535,047	342,960	339,756	169,521	344,644	174,648	374,375	333,772	341,129	3,889,477
10	-	-	-	Adhoc relief (2017)	A0124408	229,930	670,824	257,488	663,159	438,651	432,694	216,028	440,146	225,317	478,385	427,954	436,302	4,916,878
11	-	-	-	Adhoc relief (2018)	A0124409	228,595	669,489	256,153	661,824	438,651	432,694	216,028	440,146	220,405	478,385	427,954	436,302	4,906,626
12	-	-	-	Cleaning Allowance	A01251	-	-	-	-	24,199	-	-	-	-	-	-	24,199	
13	-	-	-	Personal Allowance	A01254	-	4,530	3,120	-	-	4,080	450	450	-	-	3,078	-	15,708
14	-	-	-	Integrated Allowance	A01255	11,370	163,950	11,700	156,223	81,900	79,781	9,750	83,466	10,650	95,250	77,009	78,495	859,544
15	-	-	-	Other	A01270	-	42,750	-	48,450	-	23,249	-	22,500	-	28,050	21,900	208,799	
16	-	-	-	Overtime allowance	A01271	-	663,879	89,091	81,102	548,756	521,101	69,042	48,120	56,145	63,330	45,368	-	2,185,934
17	-	-	-	Honoraria	A01273	128,000	133,000	103,000	59,613	63,000	73,000	63,000	68,000	63,000	57,000	16,500	16,500	843,613
18	-	-	-	Honoraria (Counselors Chairman Mayer)	A01273	133,700	-	-	-	-	-	-	-	-	-	-	-	133,700
19	-	-	-	Contingent paid staff	A01277	555,900	506,900	522,100	509,500	-	783,100	214,300	-	477,300	3,499,104	242,000	974,500	8,284,704
20	-	-	-	Leave salary	A01278	261,120	106,768	266,640	941,265	-	406,800	464,640	-	213,840	100,000	934,440	-	3,695,513
21	-	-	-	Others	A01299	-	519,613	840,824	17,394	-	556,047	1,053,166	843,882	-	-	-	-	3,830,926
22	-	-	Taxes	Income Tax	A01301	-	-	-	-	-	-	-	-	-	-	263,885	263,885	
23	-	Operating expenses	Communications	Postage and telegraph	A03201	-	16,240	6,450	9,430	8,168	11,520	15,360	5,055	6,110	7,500	9,110	7,500	101,443
24	-	-	-	Telephone and trunk call	A03202	12,665	34,921	51,457	32,117	20,140	41,499	39,092	32,748	31,801	28,659	30,985	32,021	388,105
25	-	-	Utilities	Gas	A03301	9,320	8,200	9,034	7,906	11,448	15,687	30,623	38,610	31,520	24,088	10,998	10,501	207,935
26	-	-	Occupancy costs	Rent for office building	A03402	-	-	-	-	-	12,024	-	-	-	-	-	12,024	
27	-	-	-	Rent other than on building	A03405	-	-	-	-	-	-	-	-	-	-	12,000	12,000	
28	-	-	-	Rent of Machine & Equipment	A03408	-	197,000	-	-	-	-	47,400	19,750	-	39,500	-	303,650	
29	-	-	Travel & Transportation	Travelling allowance	A03805	4,300	100,045	5,750	11,603	1,150	1,150	93,050	5,025	-	173,349	-	81,295	476,717
30	-	-	General	Stationery	A03901	-	30,880	20,447	42,836	25,439	31,616	46,268	47,785	59,380	11,548	25,842	10,563	352,604
31	-	-	-	Printing and publication	A03902	66,082	-	174,000	-	-	175,789	-	345,000	-	-	-	150,457	911,328
32	-	-	-	Newspapers periodicals and books	A03905	2,848	1,110	4,770	-	8,625	1,725	6,120	-	-	6,460	8,240	-	39,898
33	-	-	-	Uniforms and protective clothing	A03906	-	-	-	-	-	-	-	11,750	-	-	-	34,854	46,604
34	-	-	-	Tax refunds	A03909	-	-	-	-	120,000	-	-	100,200	120,000	45,550	-	42,965	428,715
35	-	-	-	Contribution & subscription PLGB Funds	A03913	-	-	3,345,513	-	-	-	-	-	-	-	-	3,345,513	
36	-	-	-	Exhibitions, fairs and other national celebrations	A03918	-	496,249	-	276,000	-	133,040	120,150	156,140	-	-	-	-	1,181,579
37	-	-	-	Ramadan Bazaar Expenditure	A03963	-	-	-	-	-	-	-	1,741,490	-	-	-	1,741,490	
38	-	-	-	Advertising / Publicity & Dengue	A03966	-	22,227	29,164	-	139,687	-	18,065	-	-	-	-	22,824	231,967
39	-	-	-	Others	A03970	4,980	139,680	64,050	168,172	90,100	51,017	-	98,000	-	35,668	-	-	651,667
40	-	-	-	Share of Nadra Office	A03973	126,500	43,500	165,130	56,000	63,210	35,000	91,000	70,000	-	98,000	-	122,500	870,840
41	-	Employees' Retirement Benefits	Pension	SSB Social Security Benefit	A04115	15,243	54,978	13,893	52,239	33,066	33,066	13,893	33,954	17,664	41,976	-	36,837	346,809
42	-	-	-	Pension Contribution (LCS/Non LCS)	A04120	803,806	2,447,454	901,216	2,668,724	1,598,788	1,712,288	1,591,032	1,700,909	963,590	2,560,000	1,795,755	1,785,004	20,548,566
43	-	-	-	Financial Assistance for in-service death of employee	A04171	-	-	-	-	-	-	1,600,000	-	-	-	-	-	1,600,000
44	-	Transfers	Entertainments & Gifts	Entertainments & Gifts	A06301	-	9,690	-	-	8,990	-	-	5,850	-	6,891	-	-	31,421
45	-	Physical assets	Computer Equipments	Hardware	A09201	-	2,750	3,900	3,500	860	3,200	3,560	14,000	-	-	-	2,564	34,334
46	-	-	Other Stores and Stock	Others	A09470	-	-	-	-	-	-	-	-	-	5,700	-	5,700	
47	-	-	Plant and Machinery	Purchase of Plant and Machinery	A09601	-	-	-	49,800	-	-	-	-	-	-	-	49,800	
48	-	Repairs and maintenance	Transport (Repairs)	Transport (Repairs) Official Staff Cars, Motor Cycles	A13001	-	267,414	176,160	1,090,000	83,228	34,820	204,190	100,770	-	111,486	12,334	51,163	2,131,565

Annual Report of MC Jhelum 2018-19

Monthly Compilation Of Expenditure																		
For The Financial Year 2018 - 2019																		
Major Head	Minor Head	Detail Head	Head Title	Account Code	Jul	Aug	Sep	Oct	Nov	Dec	Jan	Feb	Mar	Apr	May	Jun	Total	
49	-	-	Machinery and Equipment (Repairs)	Repair and Maintenance Water Supply Generator	A13103	-	-	-	-	131,710	-	-	-	-	-	-	131,710	
50	-	-	-	Repair and Maintenance of Others	A13199	7,000	693,679	341,698	885,868	777,676	254,205	416,964	439,746	-	743,686	336,590	225,790	5,122,902
51	-	-	Buildings and structure (Repairs)	Works - Urban (Repairs)	A13305	-	493,151	-	275,020	203,412	163,573	192,500	238,178	36,288	306,526	11,692	166,795	2,007,935
52	-	-	Computer Equipment	Hardware (Repairs)	A13701	16,970	-	-	-	6,000	3,300	39,900	-	-	-	701	-	66,871
53	-	-	-	IT Equipment (Repairs)	A13703	-	-	-	342,900	36,200	-	-	-	-	-	-	-	379,100
54	-	-	General	Maintenance of gardens (Repairs)	A13801	-	-	-	193,230	-	99,362	-	-	-	-	-	-	292,592
55	-	Utilities	POL	POL Official Staff Cars, Motor Cycles	A15101	12,334	1,315,183	105,969	1,472,897	24,062	1,237,199	666,939	674,640	27,923	1,168,342	129,353	88,154	6,922,995
56	-	-	-	POL for Fire brigade	A15103	-	-	-	34,272	20,450	-	-	-	-	-	-	-	54,722
57	-	-	-	POL for Office Generator	A15106	-	39,060	46,514	-	45,630	73,512	51,801	34,272	26,239	27,662	-	31,928	376,618
58	-	-	Electricity	Electricity (Office)	A15201	110,315	5,733	55,254	73,170	48,099	33,600	32,860	28,840	20,068	20,652	37,949	69,865	536,405
59	-	-	-	Electricity (Street Light)	A15203	135,748	126,470	326,624	179,583	209,123	254,668	297,757	265,651	79,196	221,625	182,612	212,480	2,491,537
60	-	-	-	Electricity (Water Supply)	A15204	1,224,472	1,095,077	1,328,306	1,003,219	970,499	951,612	1,136,112	1,146,762	703,318	1,196,020	1,193,356	1,510,129	13,458,882
61	-	Development	ADP Share	On going schemes ADP (current year)	A16303	-	-	-	314,078	91,170	2,380,190	510,351	-	-	264,133	112,771	147,230	3,819,923
62	-	-	-	On going schemes ADP (Previous year)	A16304	-	762,933	400,000	-	2,827,112	2,024,200	-	97,408	-	-	-	-	6,111,653
63	Liabilities	Deferred Liabilities	Other Liabilities	Group Insurance	G03108	-	-	-	110	-	-	-	-	-	-	-	-	110
64	-	Other Liabilities	Other Liabilities	Pension Fund Liability	G04101	-	-	-	15,000,000	-	-	15,000,000	-	-	20,000,000	-	-	50,000,000
65	-	Trust Account - Fund	Provident Fund	GPF (General Provident Fund)	G06124	-	8,637	-	-	-	-	-	-	-	-	-	-	8,637
66	-	-	Insurance Fund	Group Insurance Fund	G06412	-	-	-	25,405	-	15,899	97,326	18,493	-	-	-	-	157,123
67	-	Other Funds	Other Funds	Income Tax deduction from contractors / suppliers	G12714	-	-	-	-	-	1,783	39,115	900,459	665,612	-	-	-	1,606,969
68	-	-	-	PST (Punjab Sales Tax)	G12715	-	-	-	-	13,680	-	58,304	-	-	-	-	-	71,984
69	-	-	-	Other Miscellaneous Fund	G12722	-	12,600	19,001	266,494	12,000	8,764	22,318	8,868	-	-	-	-	350,045
Total:						7,209,535	21,461,884	13,157,630	36,808,608	15,256,442	19,182,284	31,826,798	16,466,343	7,035,748	38,776,668	12,277,793	12,895,968	232,355,701